

PRICE SHEET

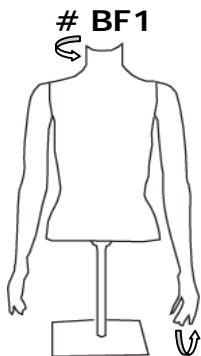
FEMALE

Product Features: Bodies now made from unbreakable plastic! Durable, Recyclable, Lightweight, Simpler Fittings, Non-cracking, Non-breaking, New Head Styles Each Year, Prices include all bases and stands. Arms and Head move for changing poses. Industries first replaceable head. Since 2002. Made in N.A.

Choose a hair color: Blue, Brown, Red, Green, Yellow, Orange, Pink, Silver, Bronze, Gold. Rainbow (101 only), Fire (101 only). *Helpful Note: Bright colors = fun and funky, Less color = conservative and fashionable.*

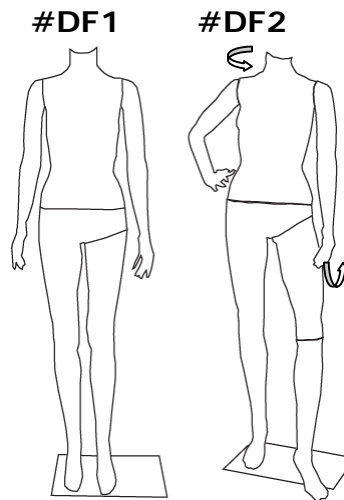


HALFBODY



Max ht: 58.5"/149cm
Min ht: 38.25"/97cm
(lower if arm fwd)
Cloth size: small
Shldr to Shldr: 14.5"/37cm
Bust: 33"/83cm
Weight: 10.5lbs/4.75kg
Professional Base: Stainless Steel pole, tempered glass base, 12x8x0.25" (30x22x0.8cm)
Arms rotate fwd/bckwd
Head rotates 360 deg

FULLBODY



Ht: 70"/177cm
Cloth size: small
Shldr to Shldr: 14.5"/37cm
Bust: 33"/83cm
Waist: 24"/61cm
Hip: 34"/86cm
Weight: 19lbs/8kg
Professional Base: Aluminum Calf Post, tempered glass base, 17x12x0.25" (43x30x0.8cm)
Box Size: 40x12.5x14.7" 103x32x36cm
Arms rotate fwd/bkwd
Head rotates 360 deg

| | |
|-----------|--------------|
| QTY 1-4 | \$349 per |
| QTY 5-9 | \$332 (-5%) |
| QTY 10-14 | \$315 (-10%) |
| QTY 15-19 | \$297 (-15%) |
| QTY > 19 | \$280 (-20%) |

discount applies to total order qty.

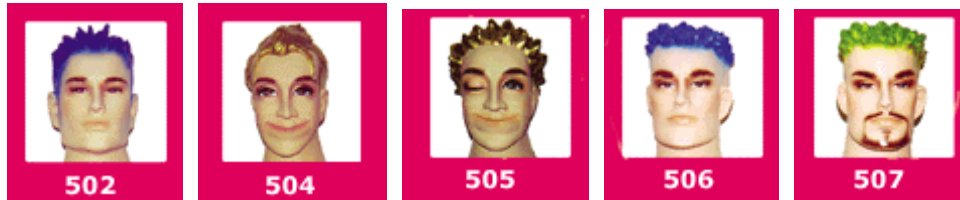
| | |
|-----------|--------------|
| QTY 1-4 | \$449 per |
| QTY 5-9 | \$427 (-5%) |
| QTY 10-14 | \$405 (-10%) |
| QTY 15-19 | \$382 (-15%) |
| QTY > 19 | \$360 (-20%) |

PRICE SHEET

MALE

Product Features: Bodies now made from unbreakable plastic! Durable, Recyclable, Lightweight, Simpler Fittings, Non-cracking, Non-breaking, New Head Styles Each Year, Prices include all bases and stands. Arms and Head move for changing poses.

Choose a hair color: Blue, Brown, Red, Green, Yellow, Orange, Pink, Silver, Bronze, Gold, Rainbow, Fire. *Note: Bright colors = fun and funky Less color = conservative and fashionable.*



HALFBODY

BF1



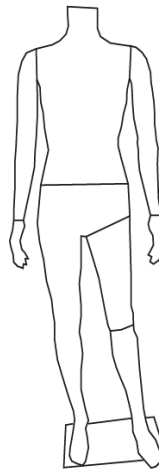
Max ht: 58.5"/149cm
Min ht: 40.5"/103cm
(lower if arm fwd)
Cloth size: med
Shldr to Shldr: 17"/43cm
Chest: 37"/94cm
Weight: 10.7lbs/4.85kg
Professional Base: Stainless Steel pole, tempered glass base, 12x8x0.25" (30x22x0.8cm)
Arms rotate fwd/bckwd
Head rotates 360 deg

| | |
|-----------|--------------|
| QTY 1-4 | \$349 per |
| QTY 5-9 | \$332 (-5%) |
| QTY 10-14 | \$315 (-10%) |
| QTY 15-19 | \$297 (-15%) |
| QTY > 19 | \$280 (-20%) |

discount applies to total order qty.

FULLBODY

#DF1



#DF2



Ht: 73"/186cm
Cloth size: medium
Shldr to Shldr: 17"/43cm
Chest: 37"/94cm
Waist: 29.5"/75cm
Hip: 37.5"/95cm
Weight: 20lbs/9.5kg
Professional Base: Aluminum Calf Post, tempered glass base, 17x12x0.25" (43x30x0.8cm)
Box Size: 43x15x15" 110x38x38cm
Arms rotate fwd/bkwd
Head rotates 360 deg

| | |
|-----------|--------------|
| QTY 1-4 | \$449 per |
| QTY 5-9 | \$427 (-5%) |
| QTY 10-14 | \$405 (-10%) |
| QTY 15-19 | \$382 (-15%) |
| QTY > 19 | \$360 (-20%) |

TO ORDER MANNEQUINS: Fill out and email/fax us the attached order form below. OR Write your order in the body of an email, with head# / hair color / body type for us OR Simply Call Toll Free at **1-888-236-1105** and we will do it over the phone, it will take 5 minutes.



Canadian Office: 1064 Bridlemeadows Manor SW, Calgary, Alberta, Canada T2Y 4L1

USA Office: Suite 502, 3707 – 5th Ave, San Diego, CA 92103-4221

TOLL FREE 1.888.236.1105

Phone: 403.875.0717

Fax: 403.398.1464

info@bigsmile.ca

www.bigsmile.ca

ORDER FORM

Fill out this order form then fax or email it to us. Fx-403.398.1464 E- Rmitton@bigsmile.ca

or

Just write an email with your selections using the head# / hair color / body type format as below.

or

Simply Call Toll Free at 1-888-236-1105 and do it over the phone.

| Head Style # | Hair Color | Body Type | Qty |
|-------------------------|----------------|---------------------|----------|
| (example) <i>101</i> | <i>Rainbow</i> | <i>Fullbody DF2</i> | <i>1</i> |

Your Company:
Your Name:
Your Ph#:
Your Email:
Shipping Address:

We will contact you to relay shipping costs, and obtain billing information.

Total Quantity: _____

Total Qty **1-4**, 0% discount
Total Qty **5-9**, -5%
Total Qty **10-14**, -10%
Total Qty **15-19**, -15%
Total Qty **> 19**, -20%