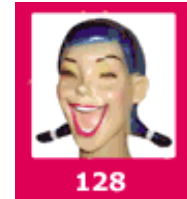
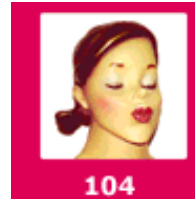
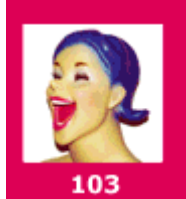


PRICE SHEET

WINTER 2010

Available Head Styles and Hair Colors: **FEMALE**

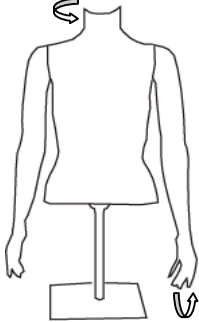
Blue, Brown, Red, Green, Yellow, Orange, Pink, Silver, Bronze, Gold. Rainbow (101 only), Fire (101 only).



Available Body Styles:

HALFBODY

BF1



Max ht: 58.5"/149cm
Min ht: 38.25"/97cm (lower if arm fwd)
Cloth size: small
Shldr to Shldr: 14.5"/37cm
Bust: 33"/83cm
Weight: 10.5lbs/4.75kg
Professional Base: Stainless Steel pole, tempered glass base, 12x8x0.25" (30x22x0.8cm)
Arms rotate fwd/bckwd
Head rotates 360 deg

FULLBODY

#DF1



#DF2



Ht: 70"/177cm
Cloth size: small
Shldr to Shldr: 14.5"/37cm
Bust: 33"/83cm
Waist: 24"/61cm
Hip: 34"/86cm
Weight: 19lbs/8kg
Professional Base: Aluminum Calf Post, tempered glass base, 17x12x0.25" (43x30x0.8cm)
Box Size: 40x12.5x14.7" 103x32x36cm
Arms rotate fwd/bkwd
Head rotates 360 deg

QTY 1-4	\$299 per
QTY 5-9	\$287 (-4%)
QTY 10-14	\$275 (-8%)
QTY 15-19	\$263 (-12%)
QTY > 19	\$251 (-16%)

discount
applies
to total
order
qty.

QTY 1-4	\$399 per
QTY 5-9	\$383 (-4%)
QTY 10-14	\$367 (-8%)
QTY 15-19	\$352 (-12%)
QTY > 19	\$336 (-16%)

TO ORDER MANNEQUINS:

Fill out the attached order form and either fax or email it to us. Fx-403.398.1464 E- Rmitton@bigsmile.ca OR Just write an email with your selections using the head# / hair color / body type format per the order form. OR Simply Call Toll Free at **1-888-236-1105** and we will do it over the phone.

Featuring: Recyclable, Lightweight, Simple Fittings, Non-cracking, Non-breaking, Updateable Head styles, New Head Styles Each Year, Professional Tempered Glass Calf-Insert Base. Arms and Head move for changing poses.

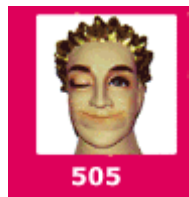
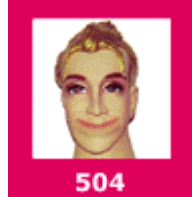
PRICE SHEET

WINTER 2010

Available Head Styles and Hair Colors:

MALE

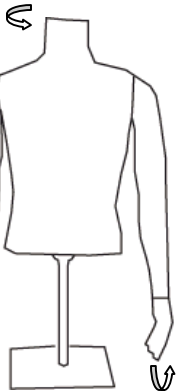
Blue, Brown, Red, Green, Yellow, Orange, Pink, Silver, Bronze, Gold. Rainbow (101 only), Fire (101 only).



Available Body Styles:

HALFBODY

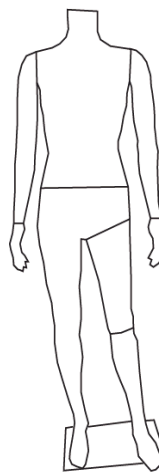
BF1



Max ht: 58.5"/149cm
Min ht: 40.5"/103cm
(lower if arm fwd)
Cloth size: med
Shldr to Shldr: 17"/43cm
Chest: 37"/94cm
Weight: 10.7lbs/4.85kg
Professional Base: Stainless Steel pole, tempered glass base, 12x8x0.25" (30x22x0.8cm)
Arms rotate fwd/bckwd
Head rotates 360 deg

FULLBODY

#DF1



#DF2



Ht: 73"/186cm
Cloth size: medium
Shldr to Shldr: 17"/43cm
Chest: 37"/94cm
Waist: 29.5"/75cm
Hip: 37.5"/95cm
Weight: 20lbs/9.5kg
Professional Base: Aluminum Calf Post, tempered glass base, 17x12x0.25" (43x30x0.8cm)
Box Size: 43x15x15" 110x38x38cm
Arms rotate fwd/bkwd
Head rotates 360 deg

QTY 1-4	\$299 per
QTY 5-9	\$287 (-4%)
QTY 10-14	\$275 (-8%)
QTY 15-19	\$263 (-12%)
QTY > 19	\$251 (-16%)

discount applies to total order qty.

QTY 1-4	\$399 per
QTY 5-9	\$383 (-4%)
QTY 10-14	\$367 (-8%)
QTY 15-19	\$352 (-12%)
QTY > 19	\$336 (-16%)

TO ORDER MANNEQUINS:

Fill out the attached order form and either fax or email it to us. Fx-403.398.1464 E- Rmitton@bigsmile.ca OR Just write an email with your selections using the head# / hair color / body type format per the order form. OR Simply Call Toll Free at **1-888-236-1105** and we will do it over the phone.

Featuring: Recyclable, Lightweight, Simple Fittings, Non-cracking, Non-breaking, Updateable Head styles, New Head Styles Each Year, Professional Tempered Glass Calf-Insert Base. Arms and Head move for changing poses.



Canadian Office: 1064 Bridlemeadows Manor SW, Calgary, Alberta, Canada T2Y 4L1

USA Office: Suite 502, 3707 – 5th Ave, San Diego, CA 92103-4221

TOLL FREE 1.888.236.1105

Phone: 403.875.0717

Fax: 403.398.1464

info@bigsmile.ca

www.bigsmile.ca

ORDER FORM

Fill out this order form then fax or email it to us. Fx-403.398.1464 E- Rmitton@bigsmile.ca

or

Just write an email with your selections using the head# / hair color / body type format as below.

or

Simply Call Toll Free at 1-888-236-1105 and do it over the phone.

Head Style #	Hair Color	Body Type	Qty
(example)			
101	<i>Rainbow</i>	<i>Fullbody DF2</i>	1
101	<i>Blue</i>	<i>Fullbody DF1</i>	1

Your Company:
Your Name:
Your Ph#:
Your Email:
Shipping Address:

We will contact you to relay shipping costs, and obtain billing information.

Total Quantity: _____

Qualified Discount: _____

Total Qty **1-4**, 0% discount

Total Qty **5-9**, -4%

Total Qty **10-14**, -8%

Total Qty **15-19**, -12%

Total Qty **> 19**, -16%